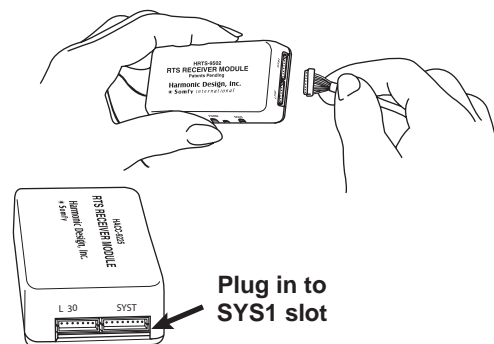
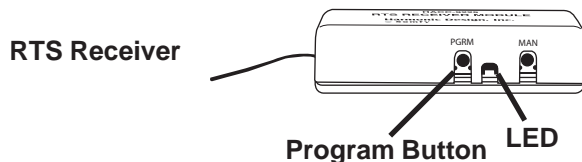


Programming & Operation Instructions

RTS For 2" Horizontal Blind Tilt Motors

STEP 1 - Connect Receiver To Motor

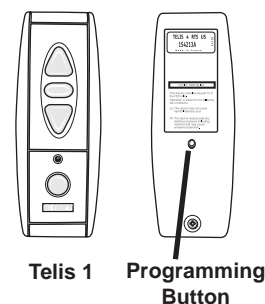
- 1) Connect Receiver Cable (provided) into designated connector located on the RTS Receiver.
- 2) Connect opposite end of Receiver Cable into connector on respective motor.



STEP 2 - Assign A Transmitter - (For use with Telis 1, Telis 4, Decora 1, Decora 4 or Chronis Timer)

NOTE: The LED on the RTS Receiver should be visible during assignment to assure correct programming.

- 1) Press and hold the **Program Button** on the **RTS Receiver** (approx. 4 seconds) until the **LED** light on the Receiver turns on, then release the button. The LED light on the Receiver will remain on.
- 2) Press and hold the **Programming Button** (pictured to the right) on the **Transmitter** (Telis, Decora or Chronis) until the LED light on the Receiver begins to **blink**, then release the button. The transmitter is now assigned to the RTS Receiver.
- 3) **Wait 1 minute** before operating shade.
- 4) Programming Complete!



OPTION 1 - Add Additional Transmitters

- 1) Press and hold the **Programming Button** on the **Previously** programmed transmitter (for 2-3 seconds) until the LED on the RTS Receiver turns on.
- 2) Press and hold the **Programming Button** on the **Additional** transmitter (for 1-2 seconds) until the the LED on the RTS Receiver blinks then turns off, confirming additional transmitter has been added.

NOTE: To clear the RTS Receiver of all previously programmed transmitters, simply press and hold the **Program Button** on the RTS Receiver (approx. 10 seconds) until the LED on the Receiver begins to blink. Wait 1 minute before beginning again at Step 2.

OPTION 2 - Assign Motors to Specific Channels/Addresses (for multi-channel transmitters only)

NOTE: To prevent unwanted channel assignments, unplug previously programmed RTS Receivers until all programming is completed.

- 1) Press and hold the **Programming Button** on the **Previously** programmed transmitter (for 2-3 seconds) until the LED on the RTS Receiver turns on.
- 2) Select desired **channel** (1-4 or all) by **momentarily** pressing the **Channel Selector** button on the multi-channel transmitter.
- 3) Press and hold the **Programming Button** on the multi-channel transmitter (for 1-2 seconds) until the LED on the RTS Receiver blinks then turns off, confirming the new channel has been added.

NOTE: To delete a specific channel/address already programmed, follow steps for "Option 2". The LED blink in Step 3 will confirm deleted channel.

