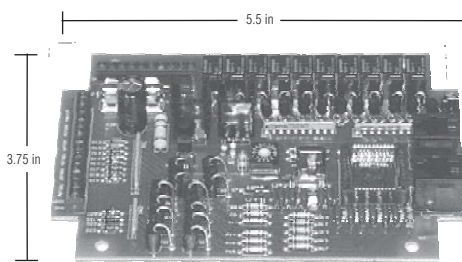




SOMFY DC-5 w/ 8 Channel IR

Installation and Operating Instruction



CATALOG NO: 6300370

DESCRIPTION

The SOMFY DC-5 is a 5-motor individual and group control system for 12 and 24 volt DC motors. It can be controlled by IGC switches or infrared control. There are many different switch combinations to allow for individual and group control. The DC-5 also has tilting capabilities for horizontal blind applications.

OPERATING PROCEDURES

A. System Power Up

1. With power off, connect a 12 or 24v DC transformer to the terminal block as indicated on the next page.
2. Operate the motors, one at a time, in the DOWN direction using the infrared transmitter or low voltage switch.
3. The motorized treatment should move down or out. If this is not correct, unplug the transformer and reverse the wires at the motor.

B. Low Voltage Switch

1. Pressing either the UP or DOWN buttons on the low voltage switch will move the motorized treatment in the appropriate direction. The motor can be stopped at any time by pressing the STOP button on the switch.
2. All motors on a single DC5 controller can be operated as a group from the Master Switch input. To control more than one DC5 from a single switch, the Master Switch input terminals should be daisy-chained.

C. Infrared Operation

1. SINGLE MOTOR TRANSMITTER: If group only remote operation is desired, the single channel transmitter can be used. First, set the rotary switch to position 0. Then, simply press the UP or DOWN buttons on the transmitter to operate all motors in the system. Pressing the center button will stop the treatment at any time.
2. 8 CHANNEL TRANSMITTER: This transmitter has the ability to control up to 8 motors individually or in groups. Set the rotary switch to position 0 to activate motor addresses 1 through 5, and position 1 for motors 6 - 8. Each individual motor is activated by first aiming the transmitter at the sensor, pressing the desired unit or group number on the transmitter and then pressing the UP or DOWN buttons. Press the center button to STOP the window treatment at any time. Pressing the group buttons (labeled 1-4, 5-8 or 1-8) will operate only the motors in those address ranges.

D. Tilt Operation

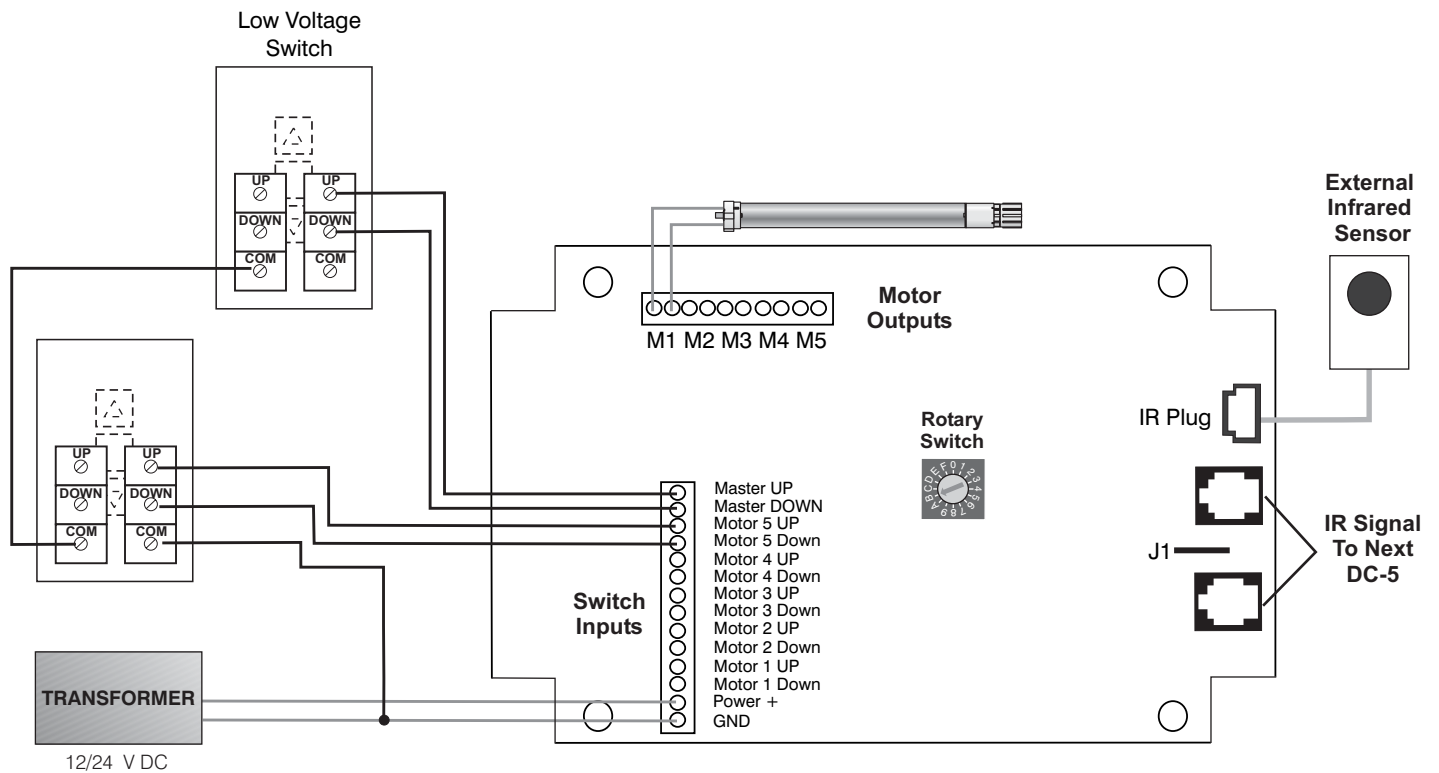
1. To operate the tilt function in horizontal blind applications, simply press and hold the directional button on the switch or transmitter (after entering the unit or group number). When the desired angle is reached, release the directional button.
2. To permanently disable the tilt function, for roller shade applications, simply cut jumper J1.

VOLTAGE RATING

INPUT: 12V DC, 6.5A min for 5 motor load.
24V DC, 6.5A min for 5 motor load

OUTPUT: 12/24V DC, 1A per motor. Maximum 1 motor per output, 5 motors per board

WIRING DIAGRAM



1. Connect a 12 or 24 volt DC transformer to the terminal block as shown above, ensure polarity is correct. The transformer used will be determined by the motor type (LT28, Concept25).
2. For Infrared remote control, mount the sensor in plain view, near the window treatments to be controlled. Connect it to the IR plug on the DC-5 controller. In order to extend the signal from one board to the next, use the modular connectors.
3. Connect the motor leads to the Motor Output terminals. For Infrared Control of more than 5 window treatments; when linking two boards together, only motor outputs 1 - 3 should be used on the second board.
4. An IGC switch can be connected to the Individual or Master terminals as indicated above. It is recommended that the common or negative lead from the power supply be connected to the GND terminal on the DC5. Then, each switch common be daisy-chained together, the last switch common should then be connected to the common lead from the power supply.

ACCESSORIES

Transformers

5700092: 12V, 5A
5700098: 24V, 6.5A

Switches

6300040: Single IGC Switch w/terminals (WHITE)
6300041: Dual IGC Switch w/terminals (WHITE)
6300140: Single IGC Switch w/terminals (IVORY)
6300141: Dual IGC Switch w/terminals (IVORY)

Accessories

6300022: Mini Infrared Sensor
6300866: Infrared Sensor
6300879: Single Channel Transmitter
6300988: Eight Channel Transmitter
6111370: Waterproof Enclosure

SOMFY CANADA

6315 Shawson Drive, Unit #1
Mississauga, Ontario L5T1J2

SOMFY SYSTEMS, INC.

47 Commerce Drive
Cranbury, NJ 08512

SOMFY MEXICO S.A. De C.V.

Calle 3 No.47, Loc.E-5
Fracc Ind. Alce Blanco
Nau.,Edo. de Mex C.P. 53370,Mex