



# MULTI CHANNEL RS232 INTERFACE

## Operating Instructions

### DESCRIPTION



This interface module translates RS232 protocol from a PC, home automation or lighting system into Somfy infrared code. It is compatible with Somfy's DC5 and MultiLink controls.

A GUI is available from Somfy Systems, please contact a sales representative for more information.

Catalog No: 6301232

### PROTOCOL

The Somfy RS232 interface uses the following communications settings:

**1200 Baud**  
**8 Data Bits**  
**1 Stop Bit**  
**No Parity**

The basic format for communication to the Interface is as follows:

**TRAN ; ADDR1 ; ADDR2 ; CMD <cr>**

TRAN: IR Transmitter Type  
ADDR1/ADDR2: Unit Address  
CMD: Command (UP, DOWN,, etc.)

NOTE: There must be a 500ms delay between each command

#### A. Send Transmitter Code

The first data to send to the RS232 interface is the transmitter type:

24 Channel: P00 (Power-Up Default, not necessary to send)  
Single Channel: P01  
8 Channel: P02

The transmitter code should be sent before each string if using the single or 8 channel protocol to "wake up" the RS232 Interface incase of a power outage.

#### B. Unit Address

The unit address must first be set on the rotary switch of the DC5 or programmed into the MultiLink control. Refer to the operating instructions for those products for further details. Each number of the unit address must be preceded by an "X". The Group Address is substituted for the unit address. For example:

Addresses 1 - 24: X1 - X24 ex; Address 13: X13;  
Addresses 25 - 99: X<digit1>; X<digit2> ex; Address 38: X3; X8;  
Group 1: XG1 Unit Addresses 1 - 4 (8 chan. protocol) or 1 - 5 (24 chan. protocol)  
Group 2: XG2 Unit Addresses 5 - 8 (8 chan. protocol) or 6 - 10 (24 chan. protocol)  
Group 3: XG3 Unit Addresses 11 - 15 (24 chan. protocol)  
Group 4: XG4 All units (all transmitter types)

#### C. Directional Command

These codes represent valid commands:

UP: U  
DOWN: D  
STOP: S  
TILT OPEN: O  
TILT CLOSED: C

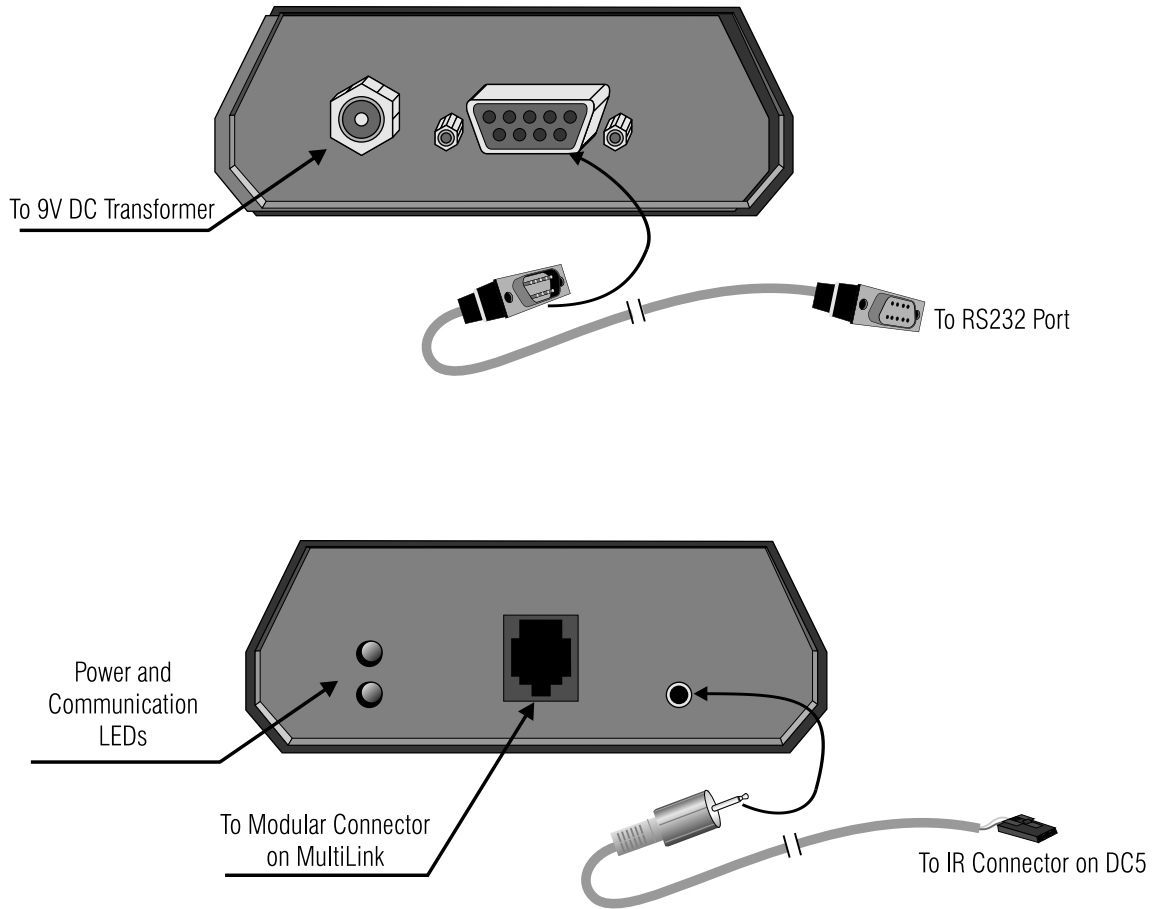
**NOTE: Command Codes MUST be capital letters**

\*\*To stop tilting, simply send STOP command (S).

### MORE EXAMPLES

Single Channel Transmitter, Unit 1, Up: P01 ; X1 ; U <cr>  
Single Channel Transmitter, Unit 1, Stop: P01 ; X1 ; S <cr>  
8 Channel Transmitter, Unit 5, Down: P02 ; X5 ; D <cr>  
8 Channel Transmitter, Unit 2, Tilt Open: P02 ; X2 ; O <cr>  
8 Channel Transmitter, Group 2, Tilt Closed: P02 ; XG2 ; C <cr>  
24 Channel Transmitter, Unit 23, Tilt Open: X23 ; O <cr>  
24 Channel Transmitter, Unit 74, Up: X7 ; X4 ; U <cr>  
24 Channel Transmitter, Group 3, Stop: XG3 ; S <cr>

# CONNECTION DIAGRAM



**SOMFY CANADA**  
6315 Shawson Drive, Unit #1  
Mississauga, Ontario L5T1J2

**SOMFY SYSTEMS, INC.**  
47 Commerce Drive  
Cranbury, NJ 08512

**SOMFY MEXICO S.A. De C.V.**  
Calle 3 No.47, Loc.E-5  
Fracc Ind. Alce Blanco  
Nau.,Edo. de Mex C.P. 53370,Mex